

# DISAPPEAR® DEODORIZER

## Malodor Counteractant Concentrate

### Product Description:

Disappear® Deodorizer effectively counteracts and cancels a broad spectrum of malodors. Use in hotel rooms, restrooms, locker rooms, dining areas, transportation vehicles, veterinary establishments and nursing homes to eliminate the odor of smoke, food, garbage, human waste, animal waste, and other malodors. Packaged for use exclusively in the innovative, TRUMIX® Chemical Management System.

### Features:

#### Multi-Purpose Deodorizer:

May be used as a room spray deodorizer, carpet extraction deodorizer, mop-on or spray cleaner/deodorizer, portable toilet, and drain deodorizer.

#### Pleasant Fragrance:

Fresh floral fragrance that is not overwhelming. Removes tough odors from fire damage, garbage, restroom, veterinary and sewage problems. Low residue formula is safe for fabrics and all washable surfaces.

### Product Specifications:

pH (concentrate)	8.5 ± 0.5
Appearance	Light Green Liquid
Fragrance	Floral Fragrance
Freezing Point	About 32°F
Solubility in Water	Complete
Flash Point	120°F

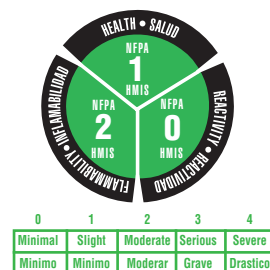
### Ingredients:

Water	7732-18-5
Nonyl phenoxy poly (ethyleneoxy) ethanol	9016-45-9
Fragrance	N/A
Octylphenoxy polyethoxyethanol	9036-19-5
Isopropyl alcohol	67-63-0

### Ecological Information:

- Biodegradable Surfactants
- Neutral pH
- Contains no Phosphorus
- Low VOC

### End-Use Rating





## Use Information-

The TRUMIX® bottle is preset to deliver a 1:128 ratio of Disappear® Deodorizer solution to any appropriate end use container. Use the diluted product as directed according to the concentrate label.

### LOADING INSTRUCTIONS



### TRUMIX™ LOADING INSTRUCTIONS:

1. **REMOVE CAP.**
2. **POSITION BOTTLE** with spout on right.
3. **INSERT BOTTLE** into dispenser until firmly seated.

### TRUMIX™ UNLOADING INSTRUCTIONS:

1. **GRASP** bottle by bottom.
2. **MOVE** release lever to right and pull bottle from unit.
3. **REPLACE CAP** and store bottle.

## DIRECTIONS FOR USE:

### DEODORIZING ROOMS & SPACES

1. **DILUTE** 1 ounce per gallon (1:128) of cold water.
2. **SPRAY** a fine mist into the center of the room.

### CARPET CLEANING

1. **DILUTE** 1 ounce per gallon (1:128) with the cleaning solution in carpet cleaning extractor.
2. **EXTRACT** then force dry.

## First Aid-

**If in eyes or on skin**, immediately flush with plenty of water. Get medical attention if irritation persists. **If swallowed**, get medical attention. NEVER GIVE ANYTHING BY MOUTH TO AN UNCONSCIOUS PERSON.

## Handling and Storage-

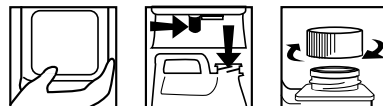
**SUGGESTED STORAGE TEMPERATURE:** Store inside at 40-90°F.

**SPECIAL HANDLING AND STORAGE:** Handle in accordance with good industrial hygiene and safety practices. These practices include avoiding unnecessary exposure and removal of material from eyes, skin and clothing. Store in a cool, dry, ventilated area. **Protect from freezing.** Thoroughly rinse empty containers.

**KEEP OUT OF REACH OF CHILDREN**

DILUTIONS DILUCIÓN	
HIGH	128
LOW	128

### UNLOADING INSTRUCTIONS



### INSTRUCCIONES DE CARGA:

1. **QUITE LA TAPA.**
2. **POSICIONE LA BOTELLA** con el pico a la derecha.
3. **INSERTE LA BOTELLA** dentro del dosificador y fíjela bien.

### INSTRUCCIONES DE DESCARGA:

1. **AGARRE** la botella por la base.
2. **AFLOJE LA PALANCA** de soltar hacia la derecha y jale la botella hacia abajo.
3. **TAPE LA BOTELLA** y guárdela.

## DIRECTIONS FOR USE:

### DESODORIZACIÓN DE AMBIENTES Y ESPACIOS

1. **MEZCLAR** 1 onza por galón (1:128) de agua fría.
2. **APLICAR** usando atomización fina para entregar el producto diluido en la habitación.

### LIMPIEZA DE ALFOMBRAS

1. **MEZCLAR** 1 onza por galón (1:128) con la solución habitual en el extractor para limpiar alfombras.
2. **EXTRAER** seguido por secado forzado.

## Personal Protection-

**Respiratory Protection:** Not needed under normal conditions.

**Ventilation:** Use with adequate ventilation.

**Eye Protection:** Safety glasses are optional.

**Protective Gloves:** Protective gloves are optional.

**Other Protective Clothing or Equipment:** Wear clothing as necessary to prevent skin contact.

## Transportation Information-

**U.S. DOT - Proper Shipping Name:** Not restricted by DOT.

**Marine Pollutant:** No